

Pure β -TCP

Trusted osteoconductive synthetic, resorbs in less than a year, allowing for active remodeling

Controlled Architecture/ Porosity

Bone cells can easily infiltrate the scaffold, and resorb gradually, resulting in high quality bone

Interlocked Design

Minimal migration from site

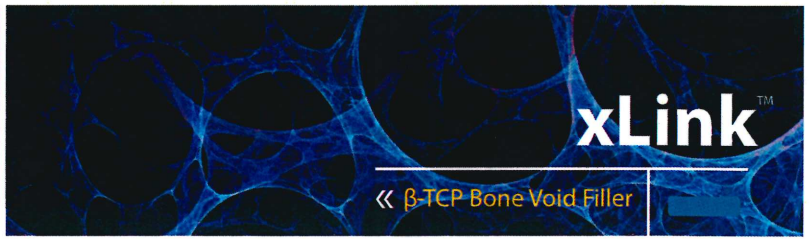
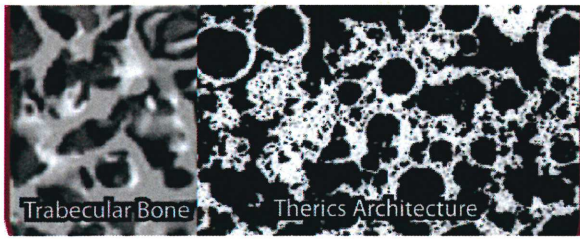
Excellent Wicking

Readily saturates with autologous bone marrow

Headquarters 1800 Triplett Blvd. Akron, OH 44306 | Ph 866.942.8698 | Fax 330.773.7697

info@thekenspine.com | www.integraspine.com

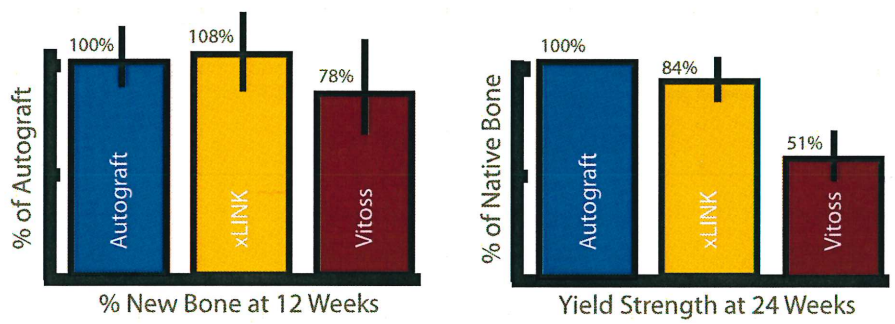




Options		
PRODUCT	SIZE	PART NUMBER
xLINK-S	5cc Bottle	50-01-0005
xLINK-S	10cc Bottle	50-01-0010
xLINK-S	20cc Bottle	50-01-0020
xLINK-L	10cc Bottle	50-02-0010
xLINK-L	20cc Bottle	50-02-0020
Bone Marrow Aspiration Kit		59-50-2001



Pre-Clinical Data



****Effect of Bone Graft Architecture on Bone Formation in a Canine Defect Model,**
 (Saini, S., Muschler, GM., McGlohorn, J.; ORS Meeting, March 2006).
 George Muschler was paid for his time as a surgeon to perform the procedures in this study.
 Sunil Saini and Jonathan McGlohorn were employees of Theric, LLC during this study.

About Integra Spine

Integra Spine is a leading provider of fusion implants and orthobiologics used in spinal surgery. Integra Spine is actively developing motion preservation devices and provides a comprehensive product line from occiput to sacrum.

www.integraspine.com

